



**AMBER  
O'SHEA**

PROJECT PORTFOLIO

osheaophotography@gmail.com



ANAMORPHOSIS

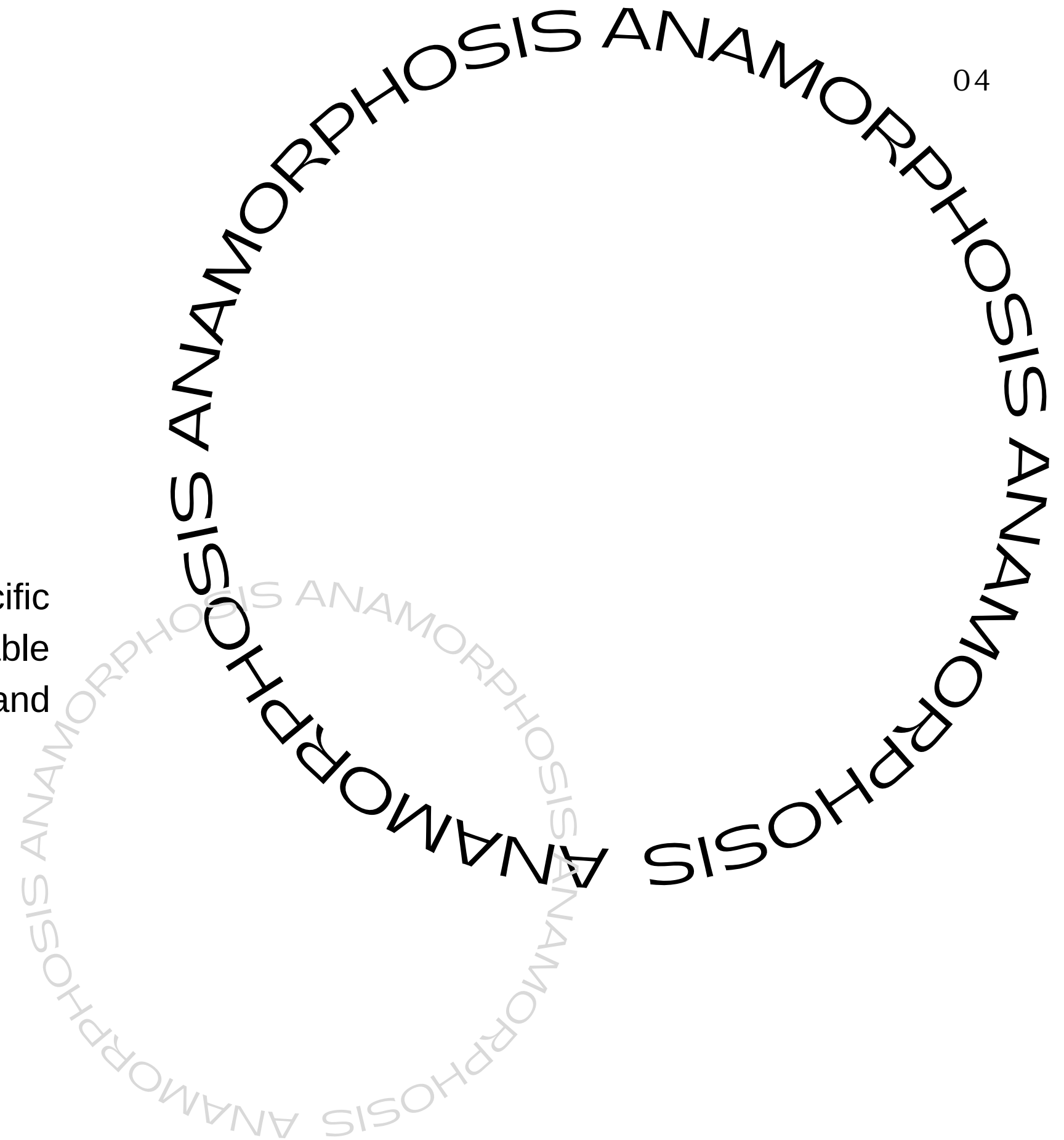
# TABLE OF CONTENTS

<b>04</b>	<b>PROJECT TITLE</b> ANAMORPHOSIS
<b>05</b>	<b>WORK STATEMENT</b> PROJECT VISION
<b>06</b>	<b>WHAT IS AN AGAMOGRAPH</b> AGAMOGRAPH
<b>07</b>	<b>INSTALLATION PLAN</b> INSTALLATION SHOTS AND FLOOR PLAN
<b>18</b>	<b>OVERVIEW OF IMAGES</b> CONTACT SHEET OF PROJECT PHOTOS
<b>35</b>	<b>CONTACT DETAILS</b> WORK WITH ME



# ANAMORPHOSIS

Is a distorted projection requiring the viewer to occupy a specific vantage point, use special devices, or both to view a recognizable image. It is used in painting, photography, sculpture and installation, toys, and film special effects.





## WORK STATEMENT

Amber O'Shea is an Irish-born artist and photographer based in Dublin. Her work addresses the intersection between design, sculpture, and the moving image and aims to blur the boundaries between fashion and modern photography in her art. The techniques and tools with each project often change but the perspective, drama and ardency of the image remain consistent. O'Shea's broad perspective on photography and image-making sees beauty in the spaces between and beyond formal distinctions. O'Shea is renowned for her adoption of digital and analogue technologies, and stands at the forefront of design, advertising, and photography. Her use of incorporating multiple forms conveys a surrealist sensibility, offering an unusual view of photography.

In these current times amongst selfie culture we live in a heavily digital saturated world, and not all is how it seems. When we look at pictures online, we can't regulate our perspective, so in this project, the spectator can choose what they want to see at each angle. This work focuses on how we have been consumed by our own image and how mirrors have been replaced by selfie culture by challenging our own human narcissism and seeing how psychology plays a role in the photographic image. The final work will be projected as large-scale lenticular billboard photographs, allowing her to produce a trickery of images in the form of Agamographs. O'Shea's work imagines new ways of experiencing and interpreting the world, placing her at the centre of a cultural zeitgeist.

ANAMORPHOSIS ANAMORPHOSIS ANAMORPHOSIS

# AGAMOGRAPH

An agamograph is a series of images that change at different angles. Also known as a Lenticular, an agamograph is an art form that uses optical illusion to create that changes when you look at it from different angles. This work is named after the Israeli sculptor, Yaacov Agam who was born in 1928. This artist is known for his optical and kinetic art.

ANAMORPHOSIS ANAMORPHOSIS ANAMORPHOSIS

## 01



Amber O'Shea  
ANAMORPHOSIS  
View from centre,  
Archival Inkjet prints in the form of Agamographs,  
102.6 x 152.4 cm, 40.4 x 60 in

INSTALLATION SHOTS

## 02



---

Amber O'Shea  
**ANAMORPHOSIS**  
View from centre,  
Archival Inkjet prints in the form of  
Agamographs,  
102.6 x 152.4 cm, 40.4 x 60 in



## 03

**ANAMORPHOSIS**  
View from right,  
Archival Inkjet Print,  
Agamograph,  
102.6 x 152.4 cm, 40.4 x 60 in



## 04



---

**ANAMORPHOSIS**

View from left,  
Archival Inkjet Print,  
Agamograph,  
102.6 x 152.4 cm, 40.4 x 60 in



# CONTINUOUS LOOP OF SELF PORTRAITS



ANAMORPHOSIS  
4 Digital Monitor Installation of Self  
Portrait, Black & White, loop of still  
image.

THIS PROCESS OF THIS WORK IS A CONTINUATION OF THE DISTORTING PROCESS. THESE IMAGES ARE MEANT TO ELICIT AN UNEASY FEELING IN THE VIEWER AND MAKE THEM WONDER WHAT THEY'RE LOOKING AT. THESE PHOTOS WERE TAKEN ON A PLATFORM THAT FUNCTIONED SIMILARLY TO A ZOOM CALL, AND THEN I PHOTOGRAPHED THE IMAGES ON MY LAPTOP USING MY DIGITAL CAMERA. THEY BEGAN TO REPLICATE A SERIES OF PHOTOGRAPHS OF SCREENS WITH THE IMAGE BLURRED UNTIL THEY WERE UNRECOGNIZABLE.

[CLICK HERE TO WATCH](#)

INSTALLATION SHOTS

## CONTINUOUS LOOP OF MOUTHS

---

**ANAMORPHOSIS**

2 Digital Monitor Installation of  
Kaleidoscope videos of mouths,  
Black & White, and Colour, loop of  
mouths.

BLACK & WHITE LOOP  
[CLICK HERE TO WATCH](#)

COLOUR LOOP  
[CLICK HERE TO WATCH](#)

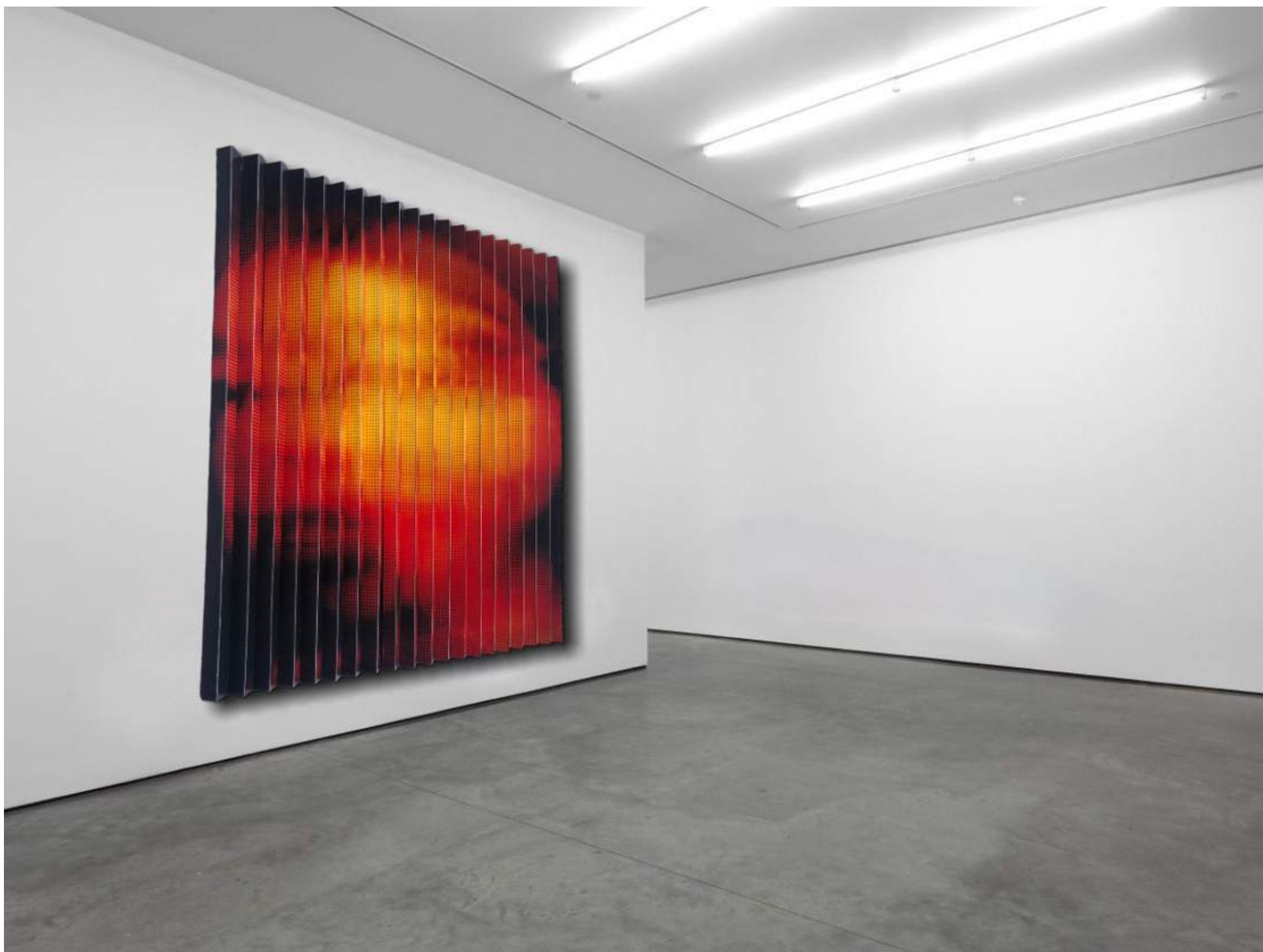


INSTALLATION SHOTS



## 01

---

**ANAMORPHOSIS****View from left****Archival Inkjet Print,  
Agamograph,  
215.9 x 190.5 cm, 85 x 75 in**

# 02

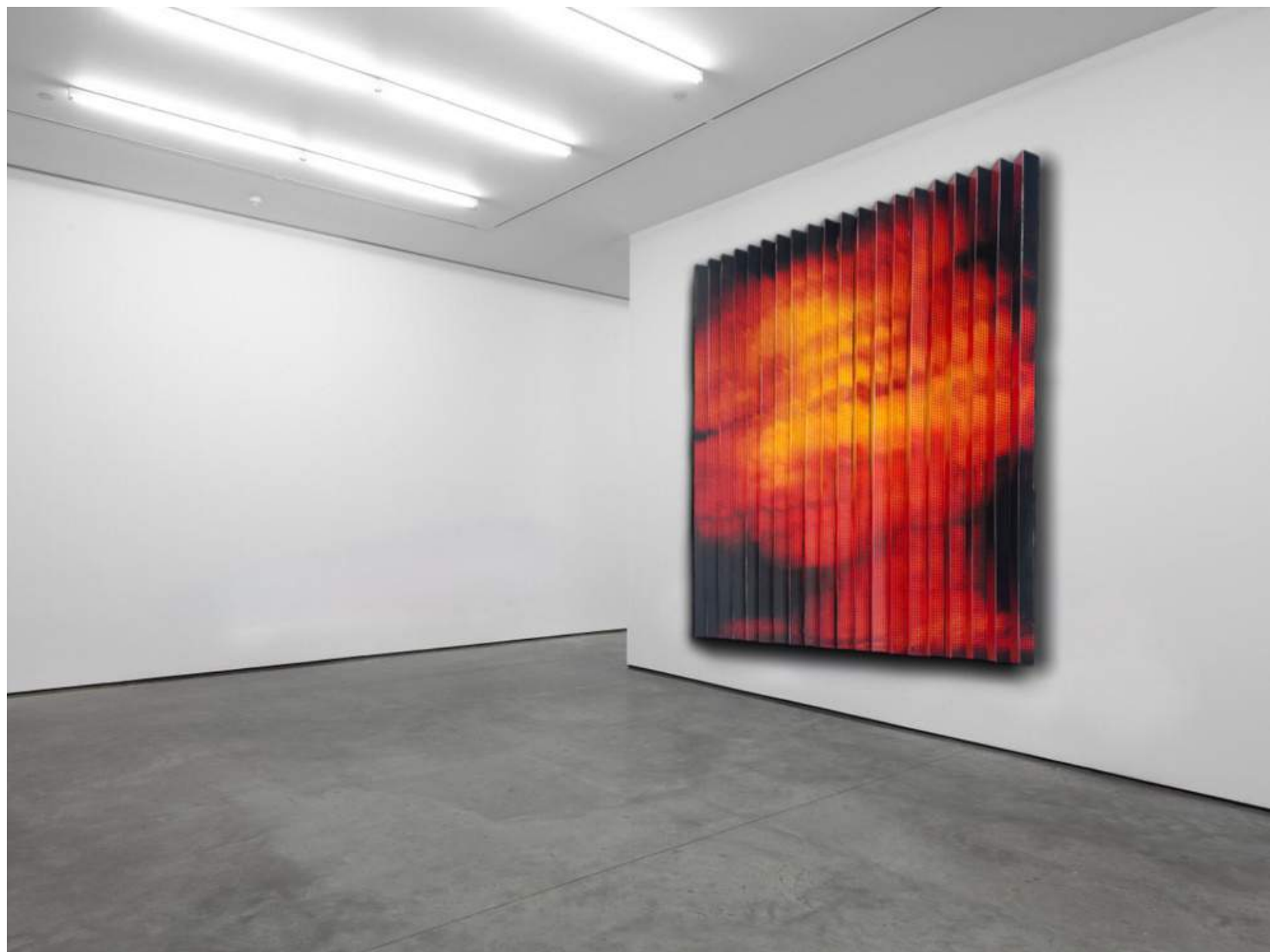
---

**ANAMORPHOSIS**  
**View from centre**  
**Archival Inkjet Print,**  
**Agamograph,**  
**215.9 x 190.5 cm, 85 x 75 in**





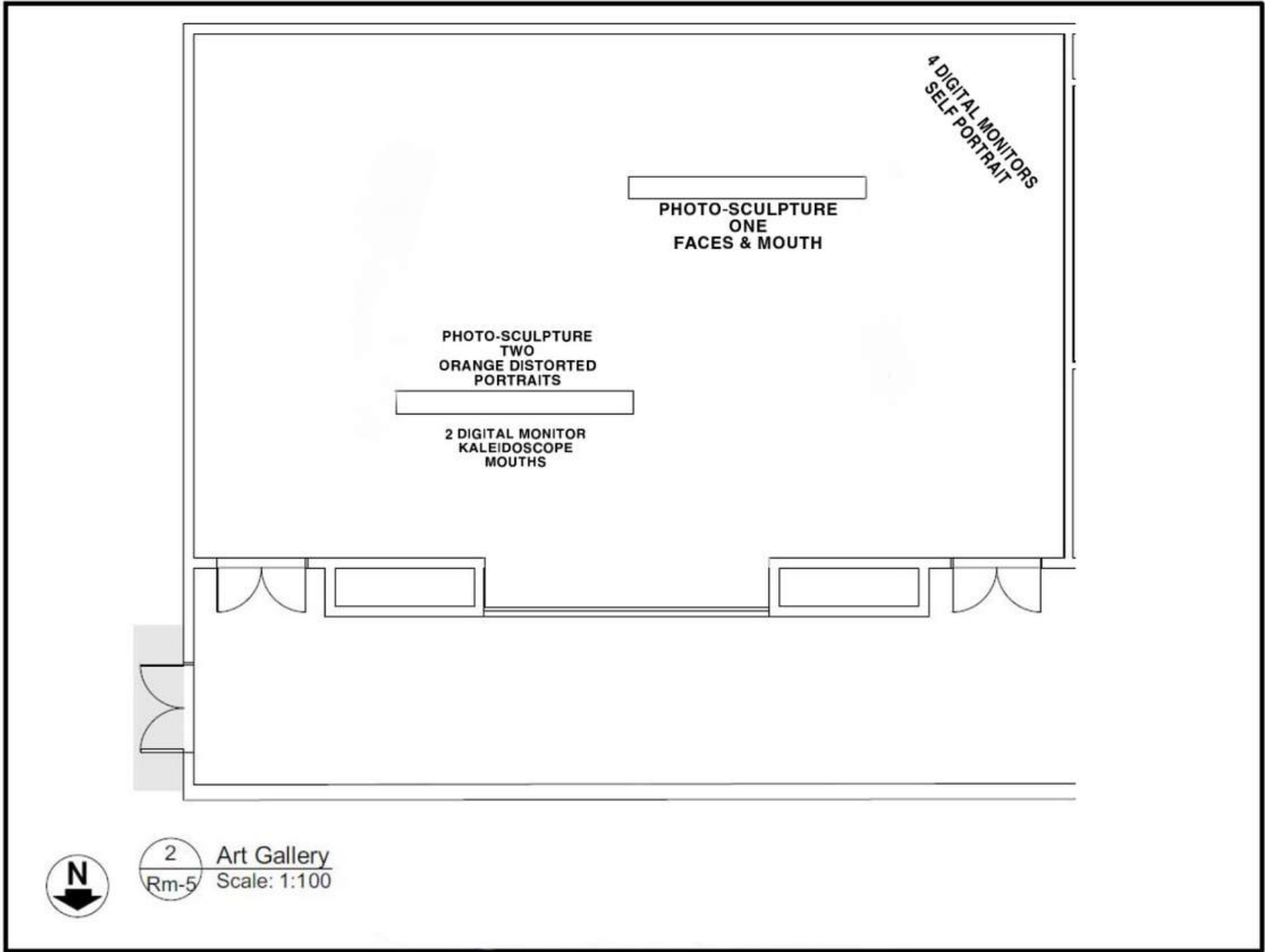
## 03



---

**ANAMORPHOSIS****View from right****Archival Inkjet Print,****Agamograph,****215.9 x 190.5 cm, 85 x 75 in**

# ANAMORPHOSIS GALLERY FLOOR PLAN



FLOOR PLAN



# INSTALLATION PLAN

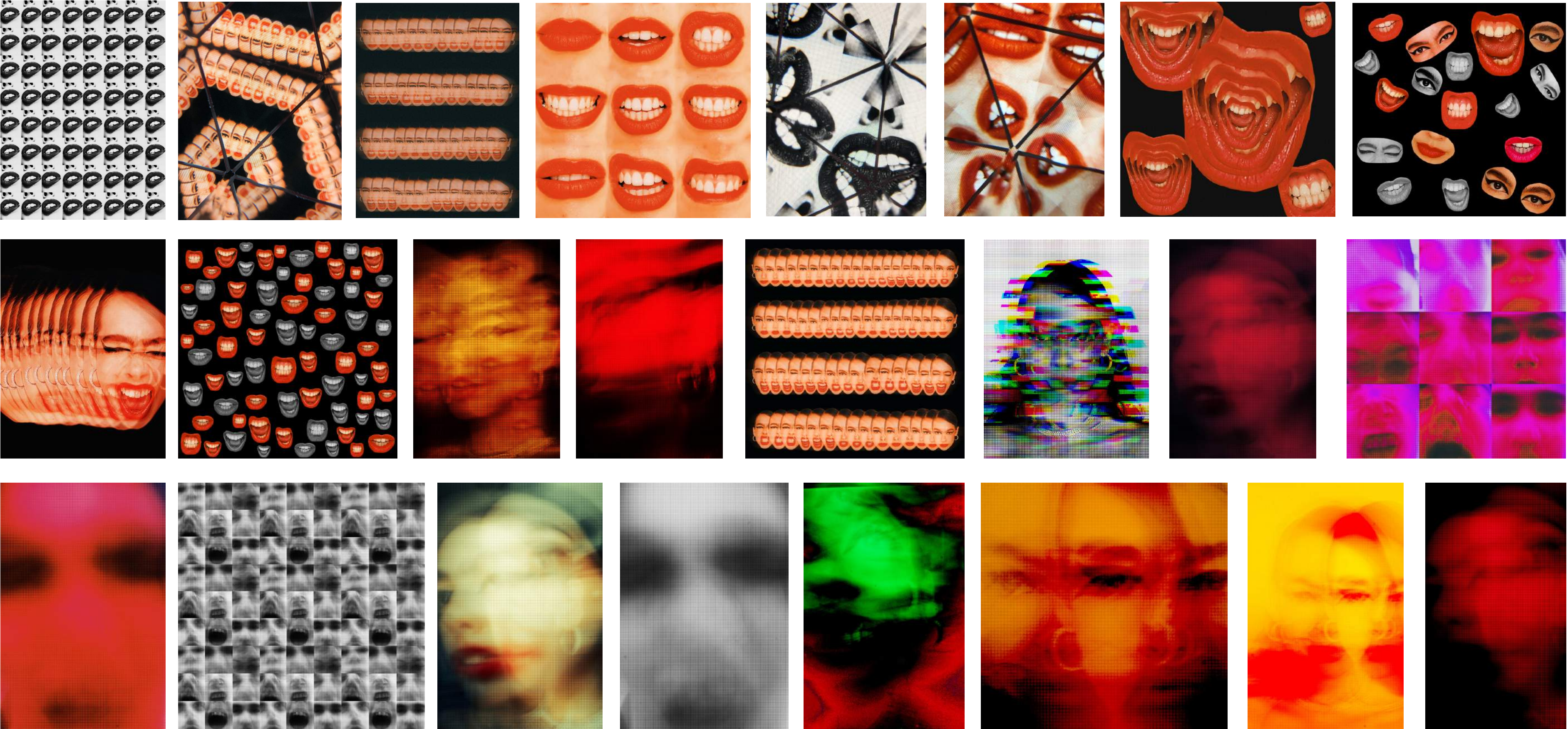
ANAMORPHOSIS explores a new way of seeing images in the form of Agamographs and continuous glitching loops. By creating a conversation about how we can't regulate our perspective with images online. We can't really tell what is a real image and what is fake. With this work, I'm capturing that anxious state of mind when consuming all of these advertisements, posts and photographs online. With the rise in social media over 8.95 million photos are posted on Instagram each day. Over 40 billion photos and videos have been shared on the Instagram platform since its conception.

In these current times amongst selfie culture we live in a heavily digital saturated world, and not all is how it seems. When we look at pictures online, we can't regulate our perspective, so in this project, the spectator can choose what they want to see at each angle. This work focuses on how we have been consumed by our own image and how mirrors have been replaced by selfie culture by challenging our own human narcissism and seeing how psychology plays a role in the photographic image. The final work will be projected as large-scale lenticular billboard photographs, allowing me to produce a trickery of images in the form of Agamographs.

I've placed the two Agamographs in front of each other but off skew, to replicate how they are mirroring each other at a distorted angle, every decision made is intended to focus on my projects aim. I chose to display the Self Portraits and kaleidoscope images on digital monitors to emphasise the distraction the screen creates. In a gallery, this would draw the audience in straight away like moths to a flame. Everywhere we look people are distracted by the screens in their pocket I am highlighting that conversation in a gallery space.

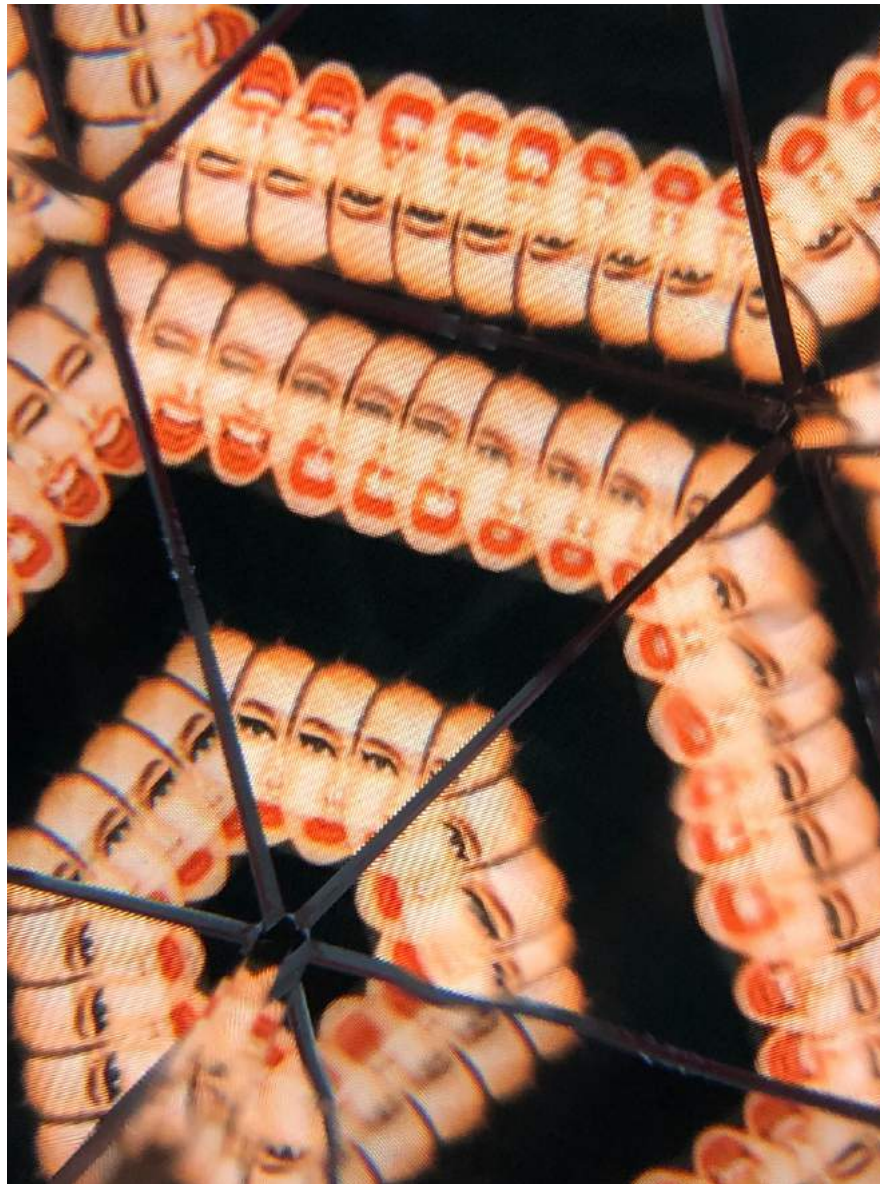
The mirror is a metaphor; the selfie camera is *the mirror*; using social media is *the mirror*; I want the viewer to feel anxious when looking at this work. This image is a moving image and it's based on perspective, the viewer gets to control what they want to see, but I think this piece will feel like the viewer is the one being observed. This is what the viewer would see if they were on the other side of the dimension.





OVERVIEW OF IMAGES FROM CURRENT PROJECT

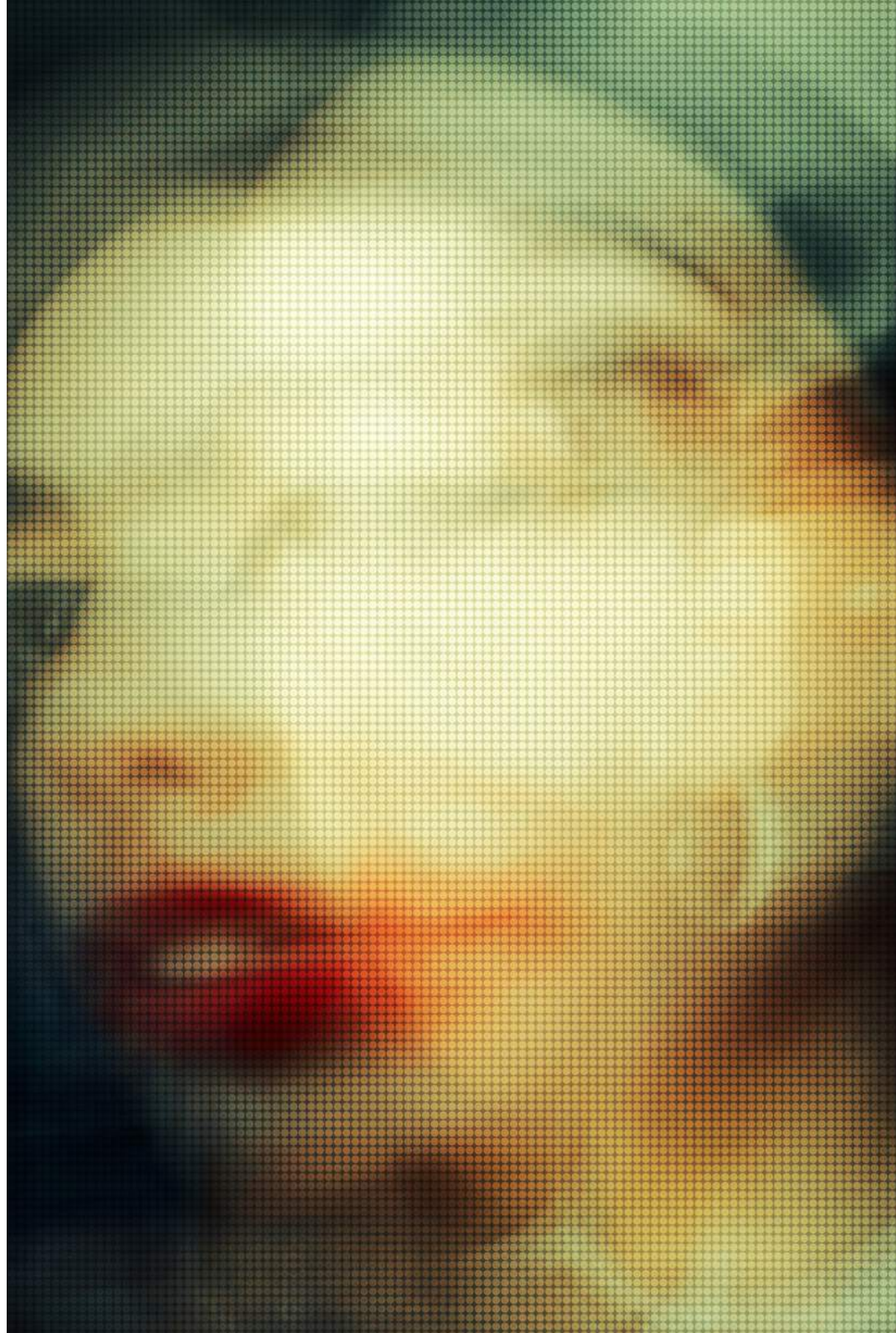




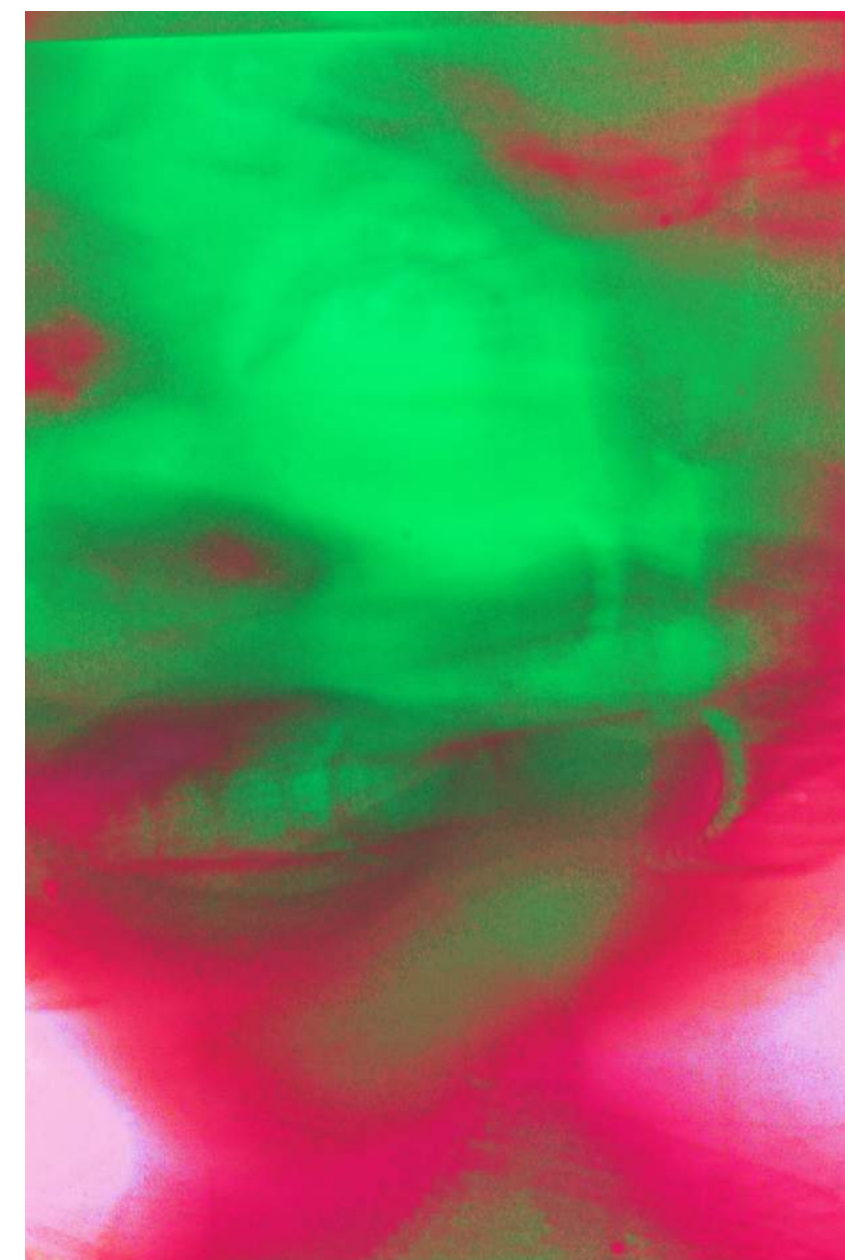
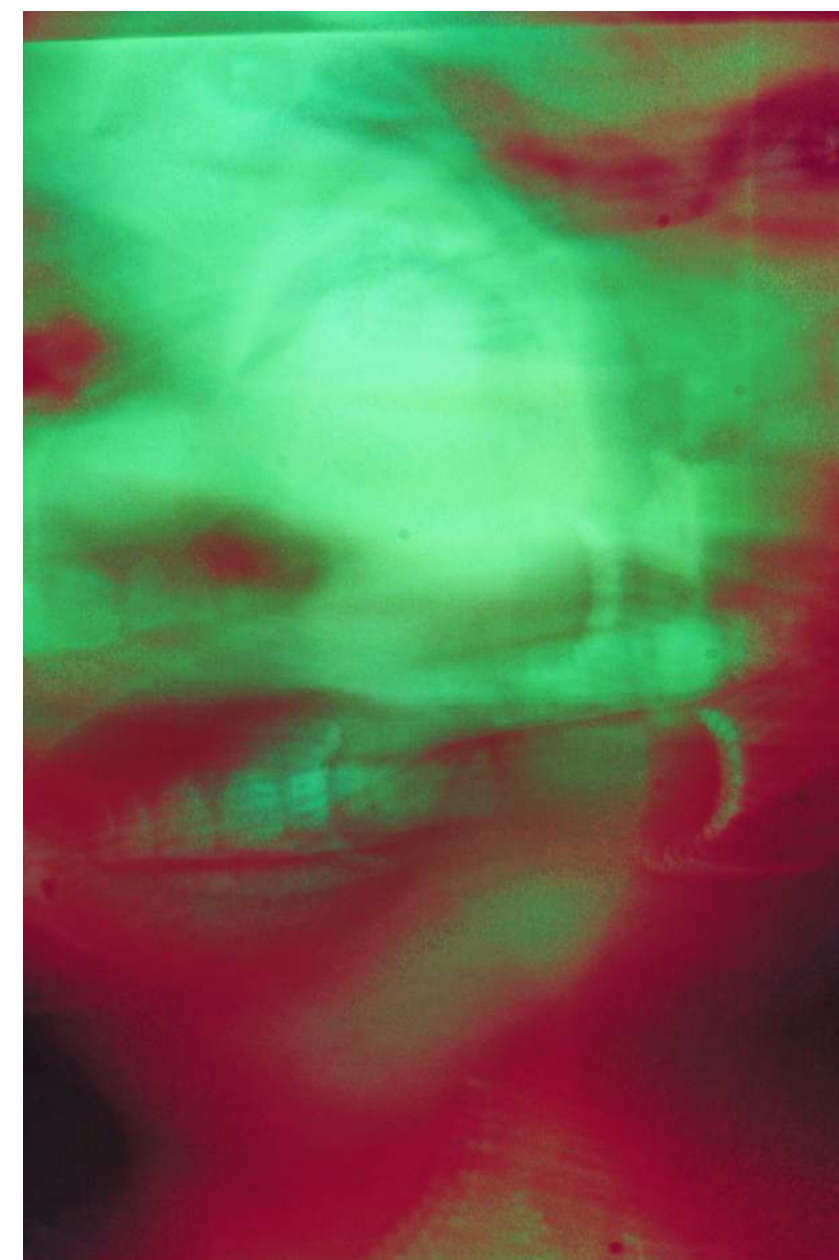


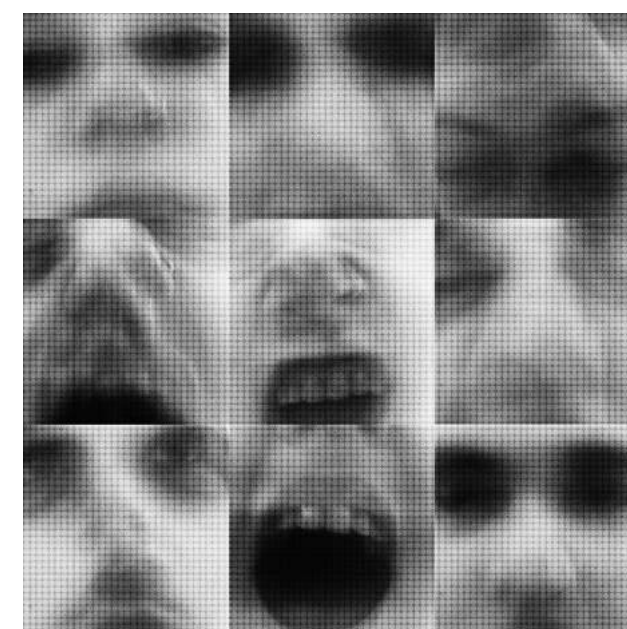










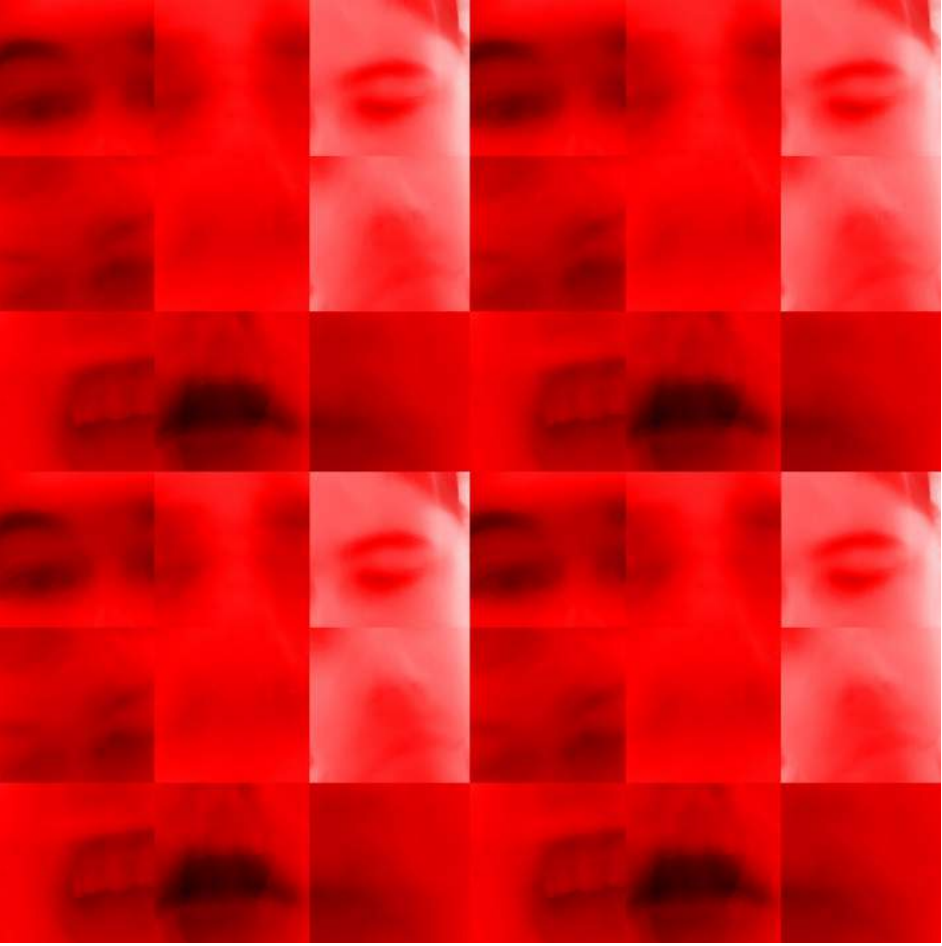


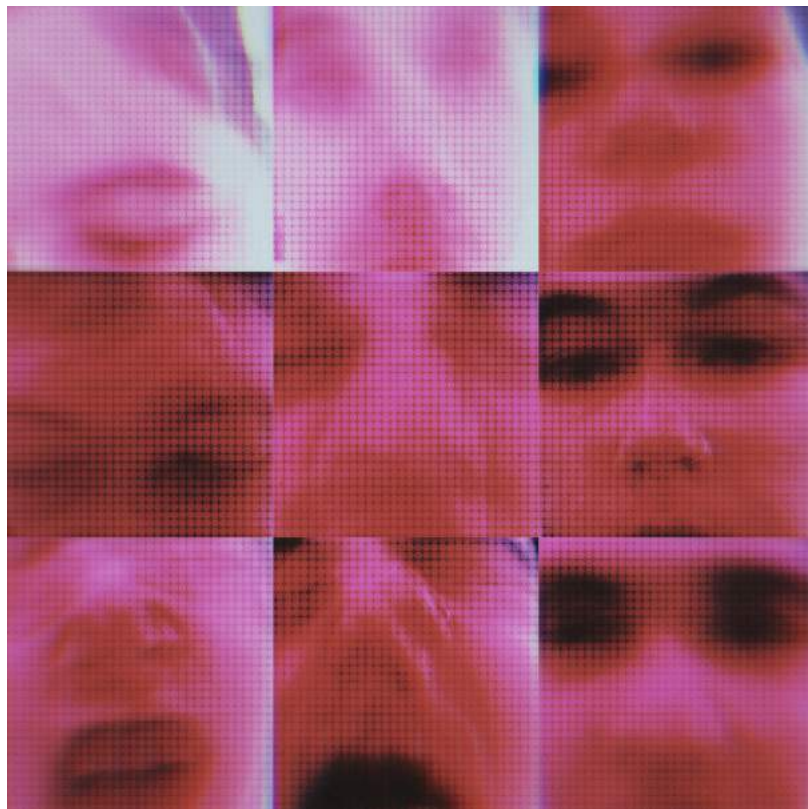
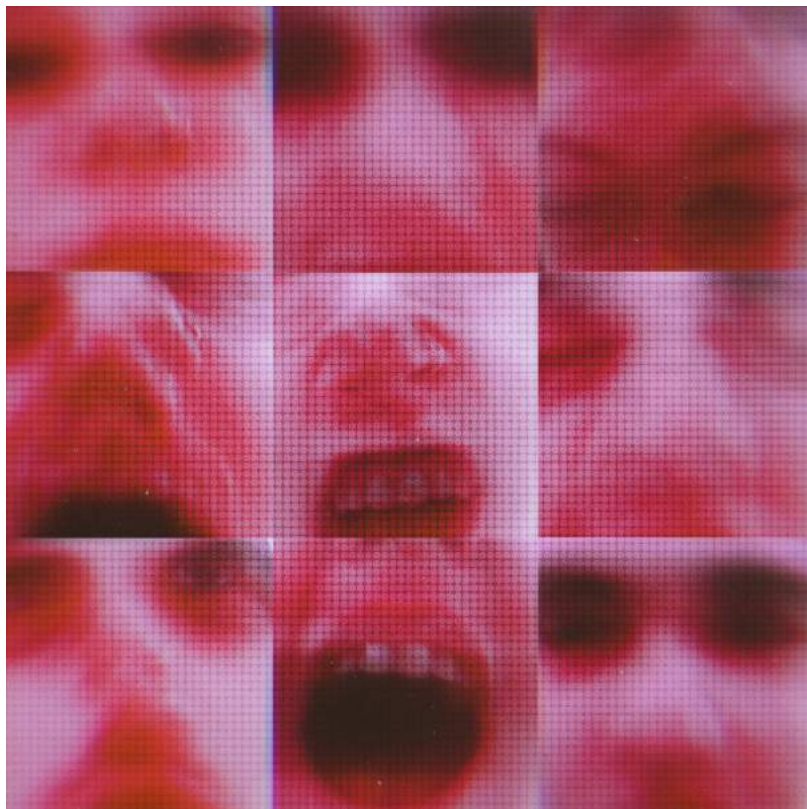
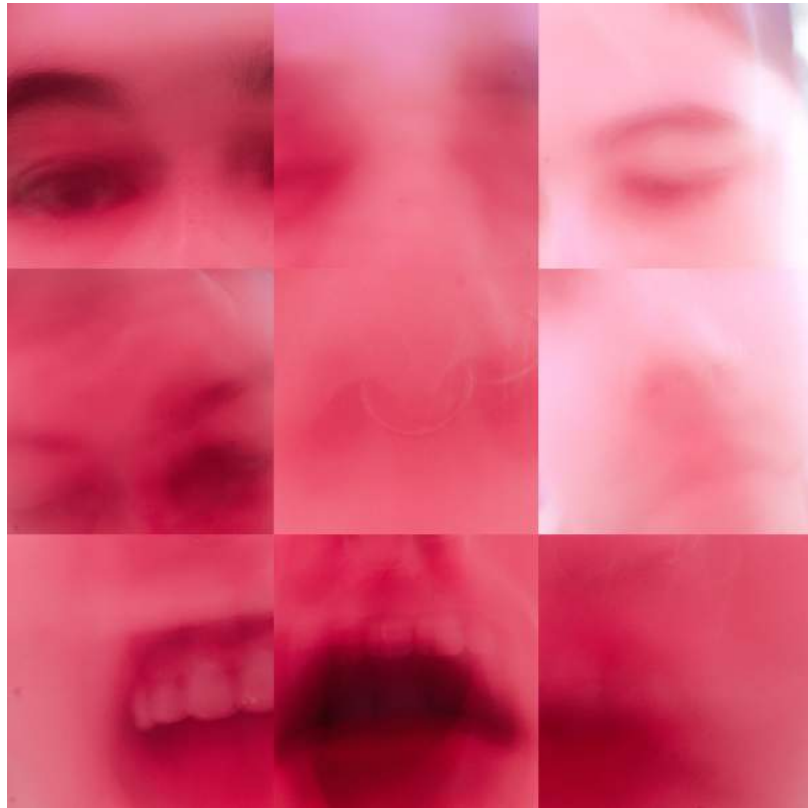
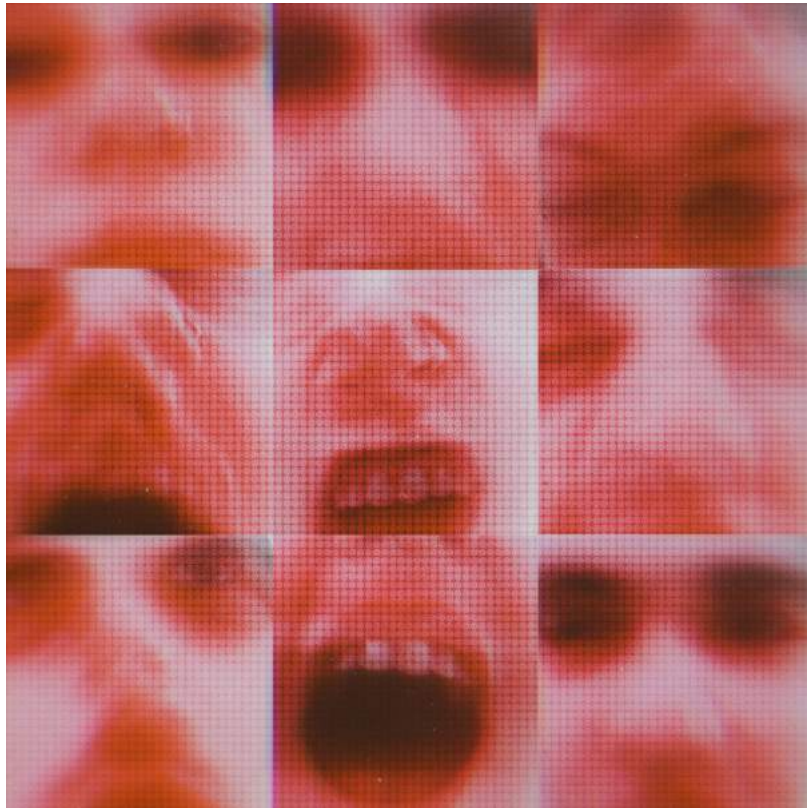




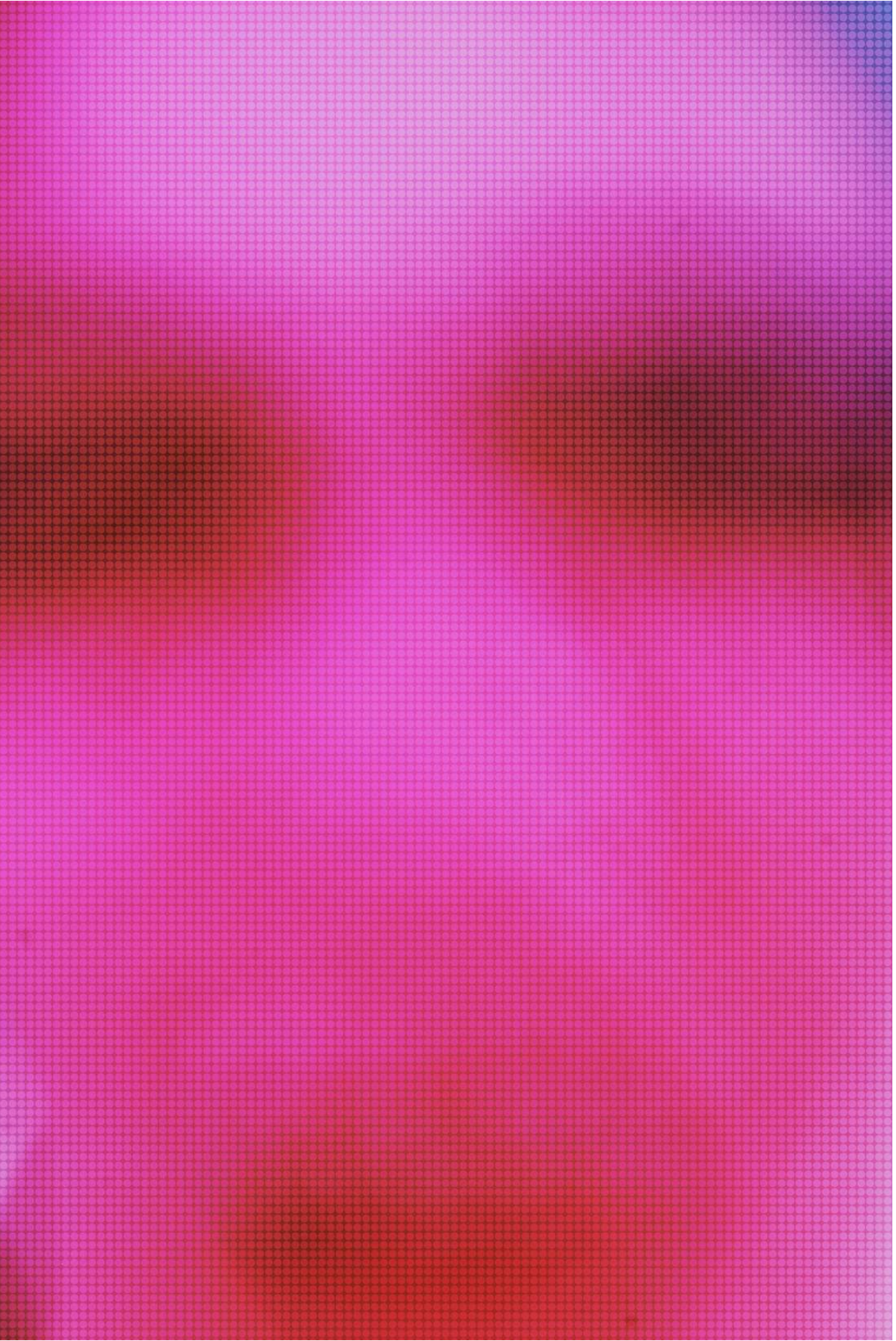




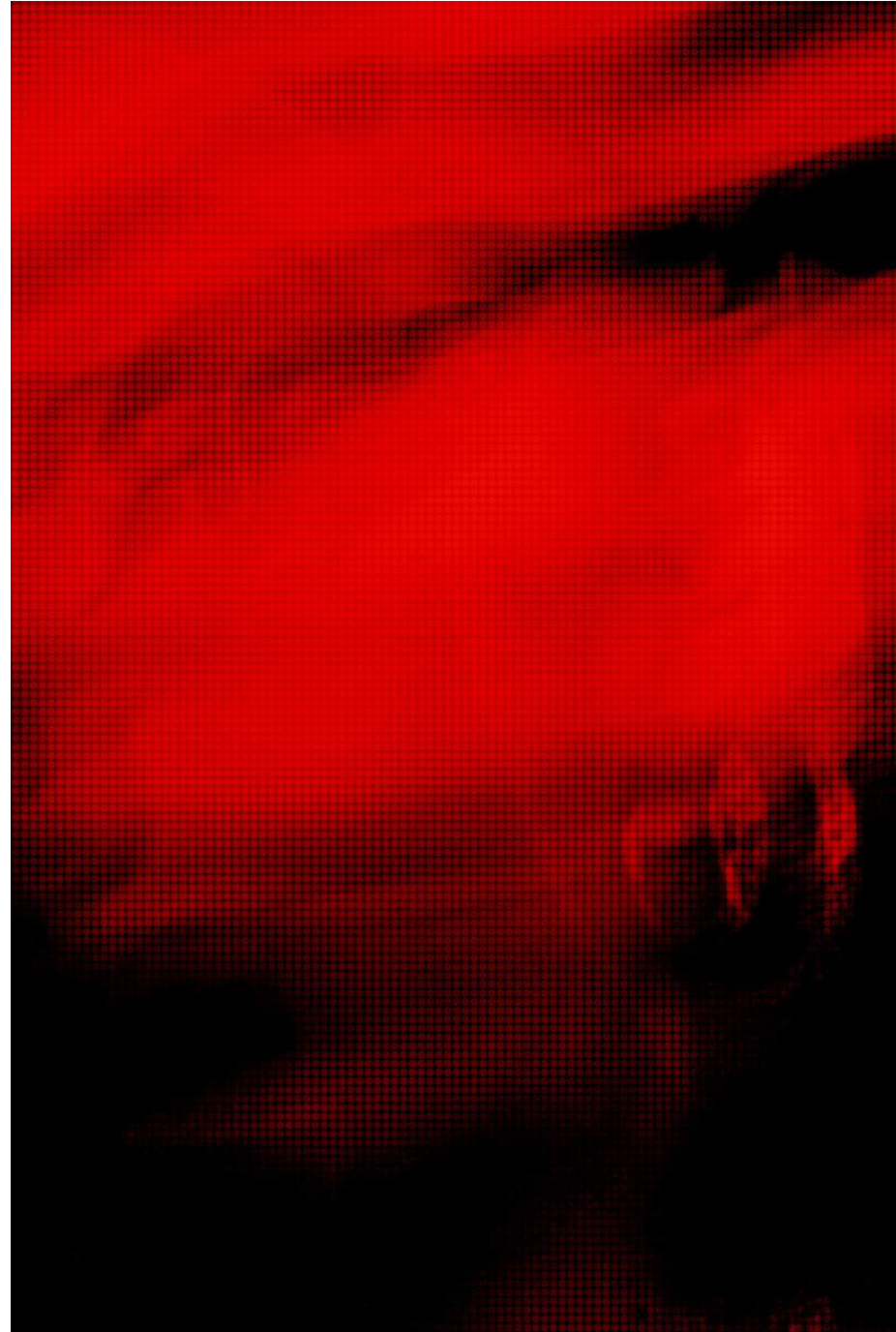
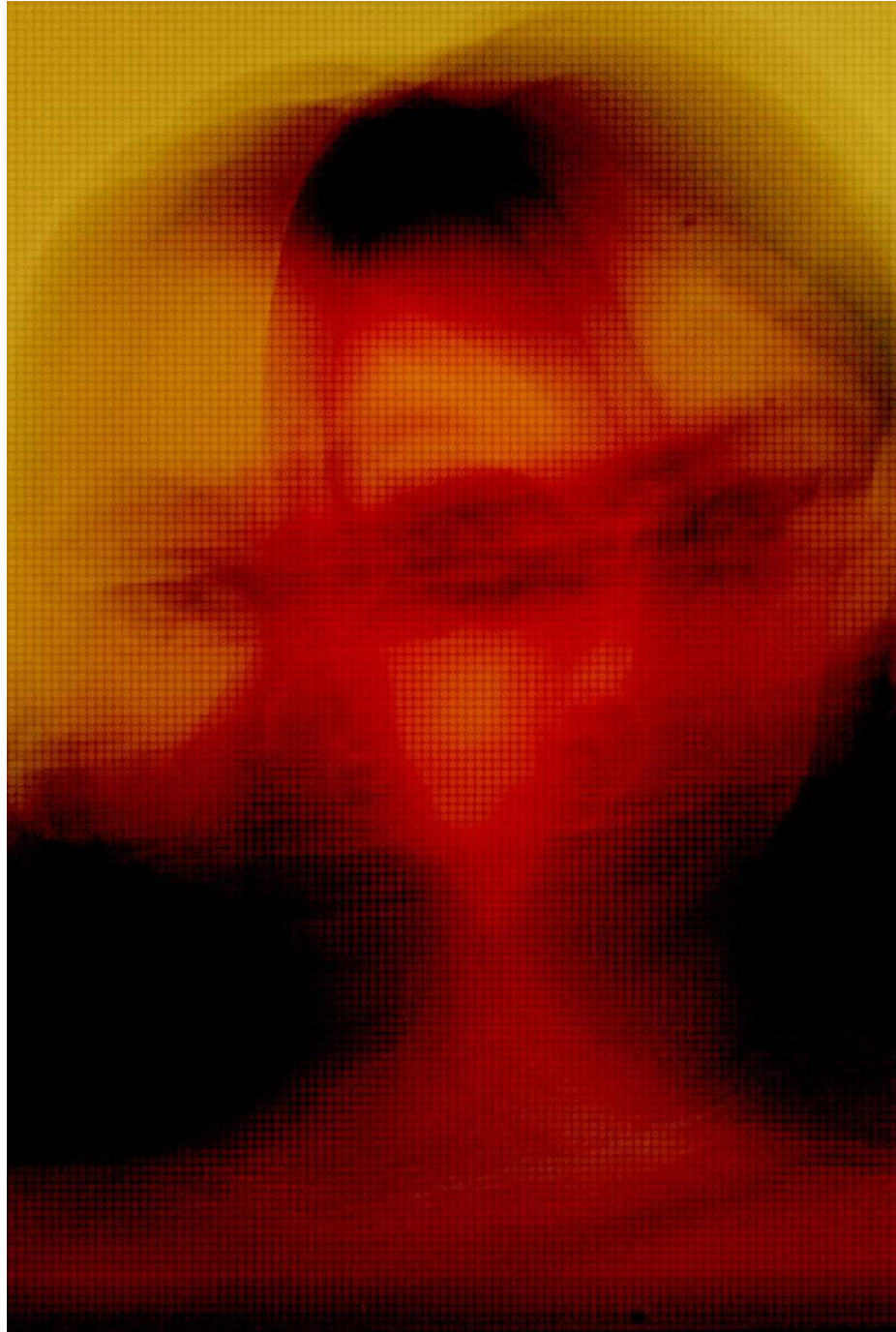








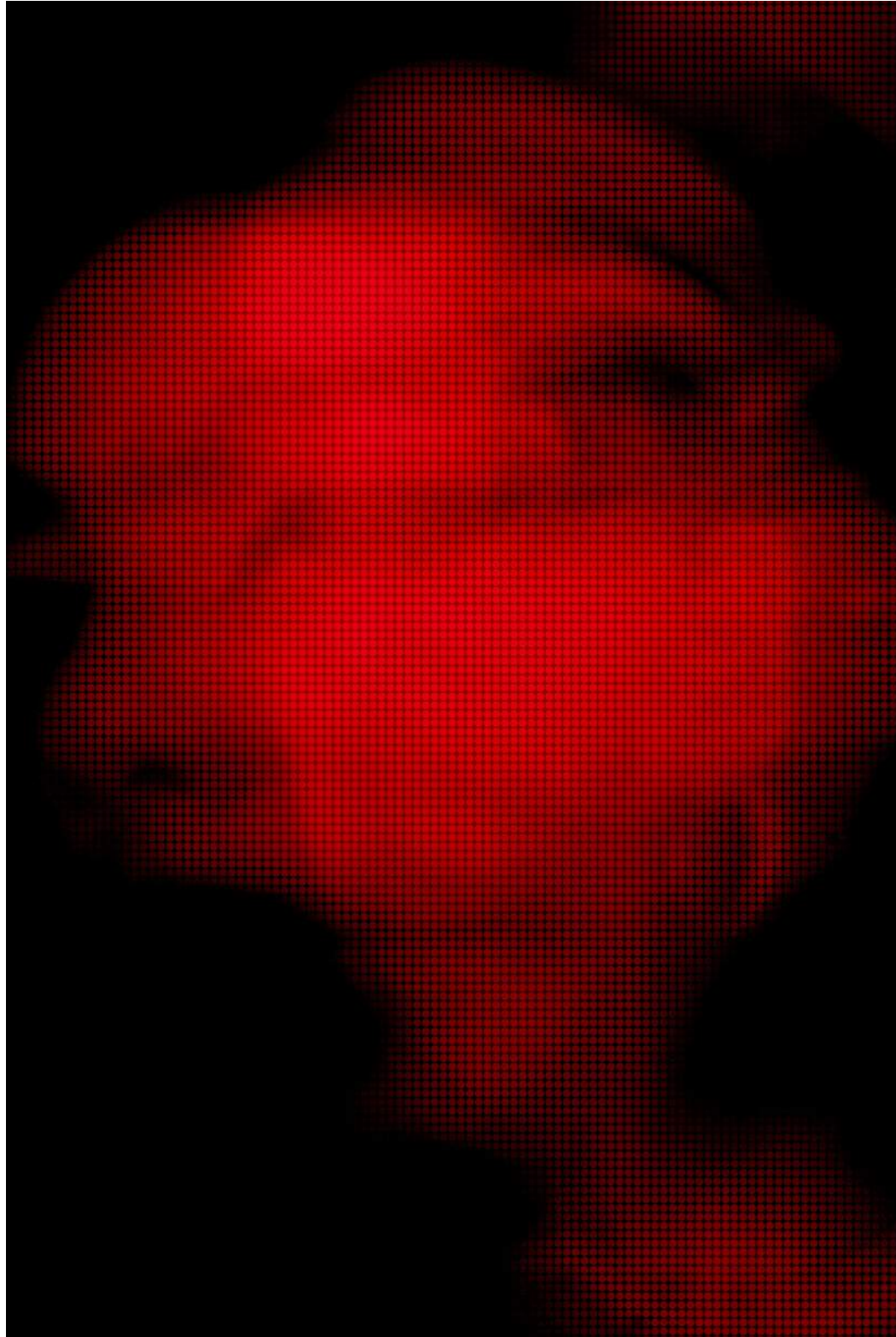




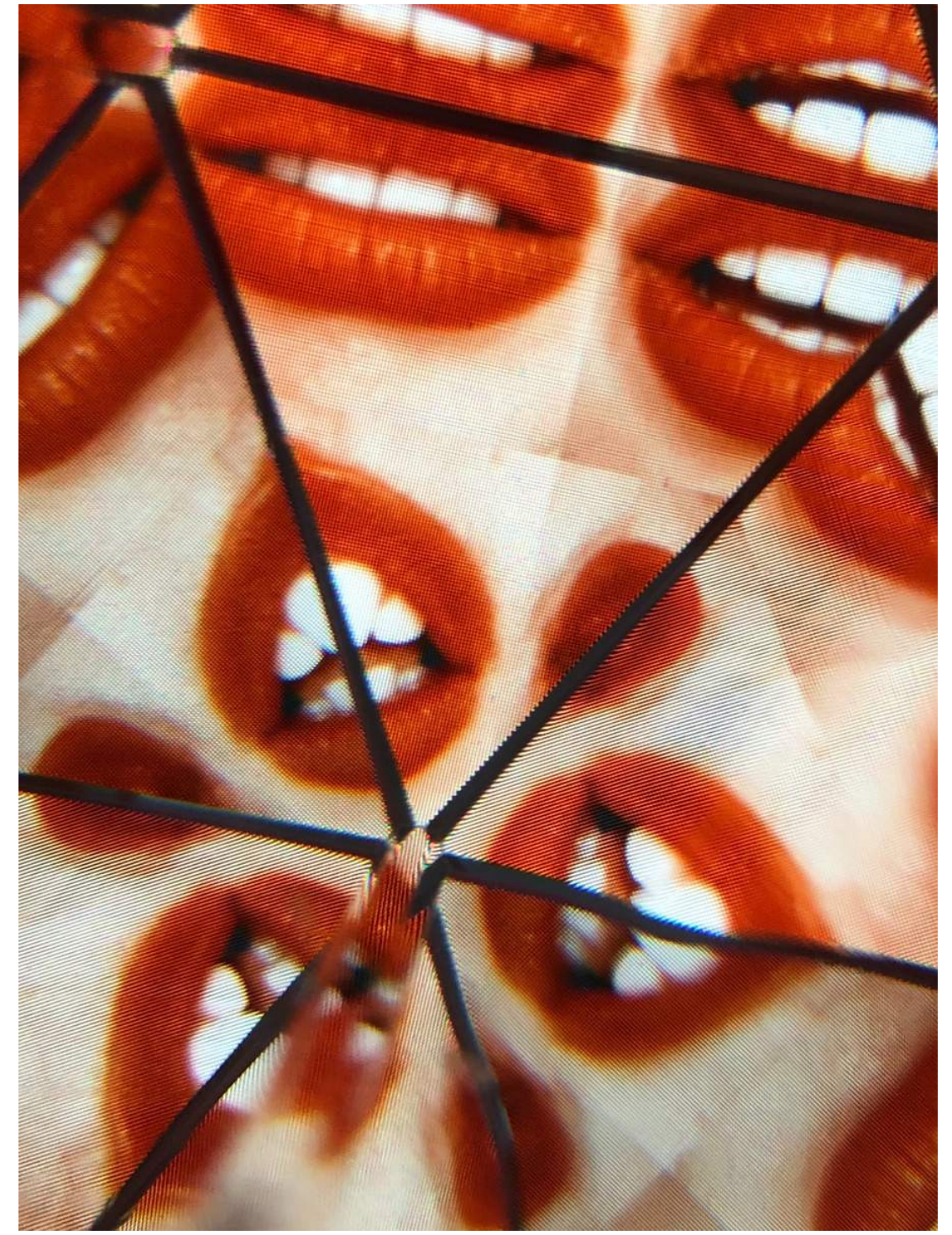


















# Work with me

## EMAIL

OSHEAOPHOTOGRAPHY@GMAIL.COM

## INSTAGRAM

@O.SHEA.O

## LOCATION

DUBLIN, IRELAND.

